

## Duvet Cover

For the highest level of luxury and comfort. Duvet covers are available in a wide variety of color and design choices, opening up a whole world of possibility for the hotel guestroom.

- Standard Duvet Cover has square corners at top and bottom
- Reinforced top stitching around perimeter with 0.5" stitches
- Standard Envelope closure.
- Standard 18" Pillowcased edge detail.
- Standard seams on 54" fabric extend to the top edge of the duvet.
- Available with or without insert.
- Self-lined and reversible
- Specify required drop. Recommend 3" longer than mattress depth.



## Duvet Options

Closure Options:	Envelope (Standard) Zipper Buttons
Standard Seams:	54" fabric has seams extending to the top Edge of the bedspread.
Edge Options:	Pillowcased (Standard) Knife (Straight) Flanged (3" W, All Edges, Mitered Corners) Welted (Matching or Coordinating Fabric) Banded (5"W, At Bottom & Sides)

Available with COM fabrics, or work with our designers to select from options in our extensive fabrics library.

Duvet Inserts are available in a variety of options. See next page for more information on stocked duvet insert styles.



# Duvet Inserts

A variety of duvet insert options, ranging from light-weight and cost-effective, to high end luxurious, are readily available from our stocked duvet insert program. Additional custom sizes and options are also available.

## Economy Poly-Down Duvet Insert

- Front: 100% Polyester Micro Fiber Fabric
- Backing: 100% Polyester White Trevira Fabric
- Shell: Double Stitched with Piped Edges
- Fill: Poly-Down Fiber
- Hypo-Allergenic and Machine Washable

ITEM #	DESCRIPTION	SIZE	WEIGHT
ET227	Twin	64" x 88"	42oz
ED228	Full	78" x 88"	50oz
EQ229	Queen	88" x 88"	58oz
EK230	King	104" x 88"	68oz

## Signature Deluxe Poly-Down Duvet Insert

- 100% Polyester Micro Fiber Fabric on Front and Back
- Shell: Double-stitched with Piped edges
- Fill: Siliconized, Anti-Bacterial, poly-down fill
- Hypo-Allergenic and Machine Washable

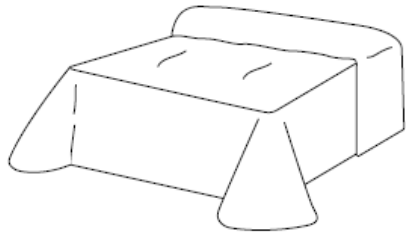
## White Duck Down Duvet Insert

- 100% Cotton
- 240 Thread Count fabric
- Shell: Double-stitched with Piped edges
- Fill: White Duck Down

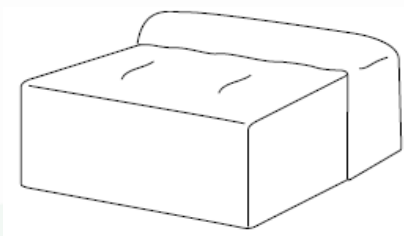
ITEM #	DESCRIPTION	SIZE	WEIGHT
DT223	Twin	64" x 88"	22oz
DD224	Full	78" x 88"	28oz



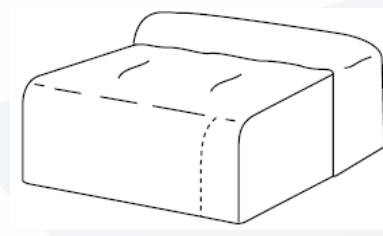
## Additional Bedding Style Options



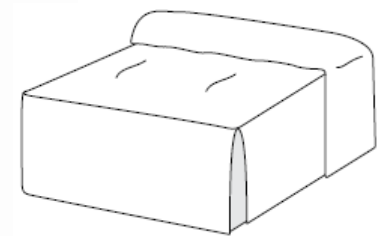
THROW WITH BELL CORNERS



CAP WITH CUT & SEWN CORNERS



WATERFALL WITH  
END CORNERS SPLIT TO MATTRESS



OPEN CORNER WITH GUSSETS



QUILTED THROW



CAPPED



MITERED BAND (5")



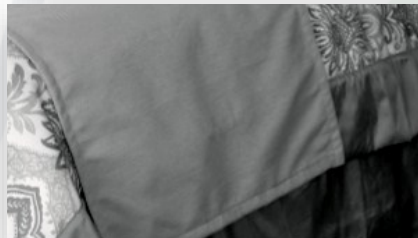
SQUARE WITH KNIFE EDGE



PILLOWCASED



ROLLED HEM

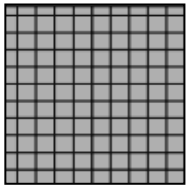


UNLINED

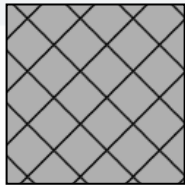


LINED WITH FLANGE (3")

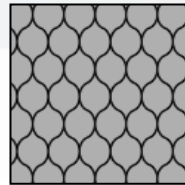
## Quilting Style Options



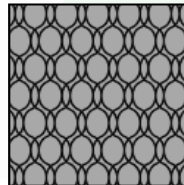
BOX (54" & 126")  
3", 6" or 9" REPEAT



STRAIGHT DIAMOND  
(54" & 126") 6" REPEAT



ONION (54" & 126")  
6" Repeat



DOUBLE ONION  
(54" & 126") 6" REPEAT