

Throw Bedspread

Throw Bedspreads are a long-held standard in the lodging industry. This style extends almost to the floor, eliminating the need for a bed skirt, and providing a simple, easy to maintain bed presentation.

- Available quilted (see available patterns below) with standard 7oz fill (custom fill weights also available), or unquilted.
- Self-lined, unlined, or contrast lining available. Double sided printing also available.
- 1" Rolled hem.
- Square corners.
- Verify drop prior to placing order.



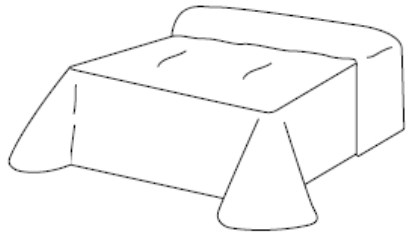
Bedspread Options

Standard Fill:	7oz bonded polyester (4oz, 8oz, and 10oz fills also available)
Standard Drop:	21"
Standard Backing;	White, 70% Polyester / 30% Cotton seamless washable sheeting. Colored linings also avail.
Standard Seams:	54" fabric has seams extending to the top edge of the Bedspread.
Standard Quilting:	Diamond, Box, Onion, or Double Onion. Natural color quilting threads. Color match available.
Style Options:	Standard (Square Corners) Bell Corner Capped Corner Waterfall - Fitted & Open Corner Gusset - Fitted, & Open Corner Cap - Fitted
Edge Options:	Rolled Hem (Standard) Knife (Straight) Flanged (3" W, All Edges, Mitered Corners) Welted (Matching or Coordinating Fabric) Banded (5"W, At Bottom & Sides)

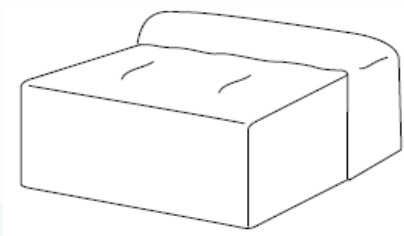
Standard Bedspread Sizes

Description	Mattress & Drop
Twin Long Body	39"W x 80"L x 21"D
Full Extra Long	54"W x 80"L x 21"D
Queen	60"W x 80"L x 21"D
King	76"W x 80"L x 21"D
California King	72"W x 84"L x 21"D

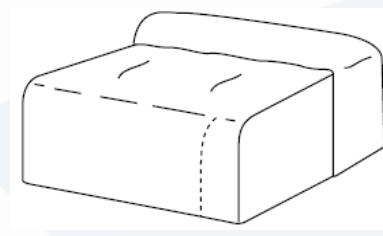
Additional Bedding Style Options



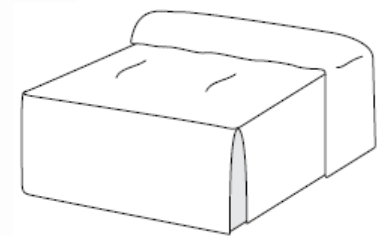
THROW WITH BELL CORNERS



CAP WITH CUT & SEWN CORNERS



WATERFALL WITH
END CORNERS SPLIT TO MATTRESS



OPEN CORNER WITH GUSSETS



QUILTED THROW



CAPPED



MITERED BAND (5")



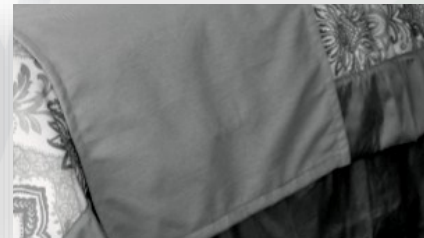
SQUARE WITH KNIFE EDGE



PILLOWCASED



ROLLED HEM

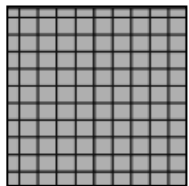


UNLINED

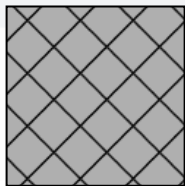


LINED WITH FLANGE (3")

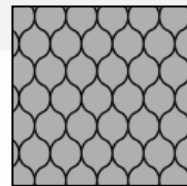
Quilting Style Options



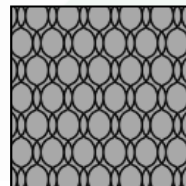
BOX (54" & 126")
3", 6" or 9" REPEAT



STRAIGHT DIAMOND
(54" & 126") 6" REPEAT



ONION (54" & 126")
6" Repeat



DOUBLE ONION
(54" & 126") 6" REPEAT