

## Bed Blanket

Bed Blankets are a lightweight option for guestroom bedding, gaining popularity as temperature controlled rooms eliminate the need for heavier bed cover styles. Bed Blankets are designed for use with a bed skirt, offering the ease of the throw-style bed cover, combined with the decorative versatility offered by the skirted bed presentation.

- Available quilted with 4oz fill, or unquilted.
- Self-lined, unlined, or contrast lining available. Double sided printing also available.
- Knife Edge
- Square corners.
- Verify drop prior to placing order.



## Bed Blanket Options

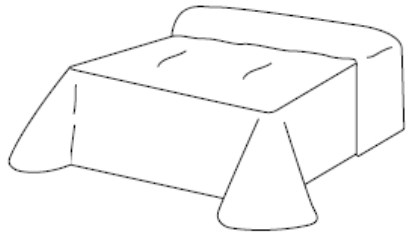
Standard Fill:	4oz bonded polyester
Standard Drop:	16"
Standard Backing:	Colored lining to match dominant face fabric color. Also available reversible, with same fabric front and back.
Standard Seams:	54" fabric has seams extending to the top edge of the Bed Blanket.
Standard Quilting:	Diamond, Box, Onion, or Double Onion. Natural color quilting threads. Color match available.
Edge Options:	Knife (Standard) Rolled Hem (1") Flanged (3" W, All Edges, Mitered Corners) Welted (Matching or Coordinating Fabric) Banded (5"W, At Bottom & Sides)

Available with COM fabrics, or work with our designers to select from options in our extensive fabrics library.

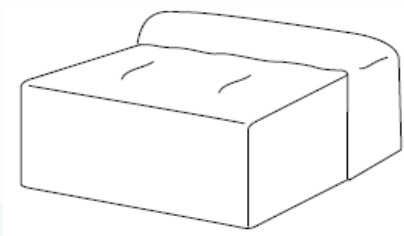
### Standard Bed Blanket Sizes

Description	Mattress & Drop
Twin Long Body	39"W x 80"L x 16"D
Full Extra Long	54"W x 80"L x 16"D
Queen	60"W x 80"L x 16"D
King	76"W x 80"L x 16"D
California King	72"W x 84"L x 16"D

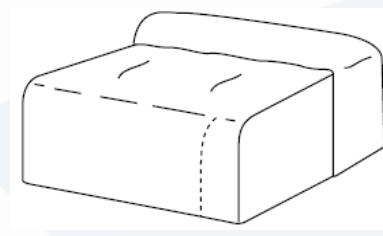
## Additional Bedding Style Options



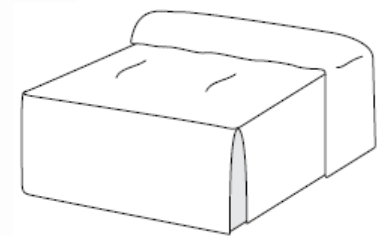
THROW WITH BELL CORNERS



CAP WITH CUT & SEWN CORNERS



WATERFALL WITH  
END CORNERS SPLIT TO MATTRESS



OPEN CORNER WITH GUSSETS



QUILTED THROW



CAPPED



MITERED BAND (5")



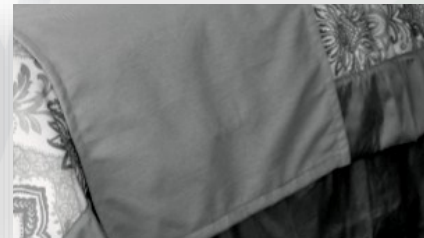
SQUARE WITH KNIFE EDGE



PILLOWCASED



ROLLED HEM

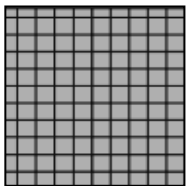


UNLINED

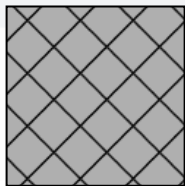


LINED WITH FLANGE (3")

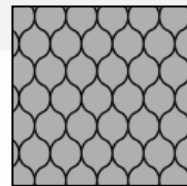
## Quilting Style Options



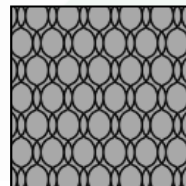
BOX (54" & 126")  
3", 6" or 9" REPEAT



STRAIGHT DIAMOND  
(54" & 126") 6" REPEAT



ONION (54" & 126")  
6" Repeat



DOUBLE ONION  
(54" & 126") 6" REPEAT